



# Acidity Removal - HDU 2x15/25-25

For systems with fluid volumes up to 600 ltr.

## Product Sheet

### APPLICATION

The CJC® HDU 2x15/25-25 is removing acidity, sludge, particles, and moisture from HFD-Fluids (Phosphoric Ester), transformer oils (Insulating oils) and crankcase lube oils (gas engines). When oils/fluids degrade they form acidity compounds, especially ester based fluids, which have access to humidity. Acidity (TAN) can increase to dangerous levels, causing acidity corrosion and etching/pitting.

### BENEFITS

- Reduced risk of unscheduled downtime e.g. turbine trips
- Increased oil/fluid life by reducing TAN
- Increased machine component life
- Suitable for smaller systems/fluid volumes up to 600 ltr (160 gal)

### FUNCTION

The CJC® Oil Filter circulates the fluid from the reservoir, drawing the fluid from the lowest and most contaminated point. During the first phase of treatment, the fluid passes through a neutralizing CJC® Filter Insert, absorbing the acidity from the fluid. The second phase uses a CJC® Cellulose Filter Insert, removing particles, sludge and small amounts of moisture. The fluid is then returned to the reservoir.

### THE FILTER PUMP

The filter pump is a gear wheel pump. The electric motor can be supplied for all standard AC voltages.

### FILTER INSERT

The CJC® Cellulose Filter Insert consist of several cellulose discs bonded together. The neutralizing media is an ion exchange resin, supplied in a replaceable Filter Insert bag.



The CJC® Fine Filter for acidity removal  
HDU 2x15/25-25 PV

### TECHNICAL DATA

		2x15/25-25
Pump flow, per hour (std.)	ltr/gal	45 / 12
Pump type		PV
Pump inlet pressure, max.	bar/psi	0.5 / 7
<b>Filter Insert 15/25</b>		
Fine Filter Inserts	pcs.	1x 15/25
Acidity Removal Inserts		1x 15/25
Power consump., aver.	kW	0.18
Pressure drop, max.	bar/psi	1.8 / 26
Oil temperature, max. *)	°C/°F	80 / 176
Dirt holding capacity, appr.	ltr/gal	1.5 / 0.4
Dry weight	kg/lb	73 / 160
Operating weight, wet	kg/lb	64 / 142
Design pressure, filter	bar/psi	7 / 102
Ambient temperature, max.	°C/°F	45 / 113
Article no.		FA7617206

\*) The standard filters are designed for a max. temp. of 80°C / 176°F. Other conditions, please contact us.

### FILTRATION ABILITY

- **Particle Removal**  
All CJC® Filter Inserts have the following filtration degree:
  - **3 µm absolute:**  
98.7% of all solid particles > 3 µm
  - **0.8 µm nominal:**  
50% of all solid particles > 0.8 µm are retained in each pass.**The dirt holding capacity** is 1.5 litres of evenly distributed solids.
- **Degradation Products**  
Oxidation by-products, resin / sludge, and varnish are retained by the cellulose material. The cellulose will retain appr. 1 kg of degradation products.
- **Water Removal**  
The water absorption potential is up to 50% (i.e. 750 mL H<sub>2</sub>O) of the total contaminant holding capacity.

### APPLICABLE FILTER INSERTS

Type	Application for removal of
EL	acidity
BG	particles and sludge



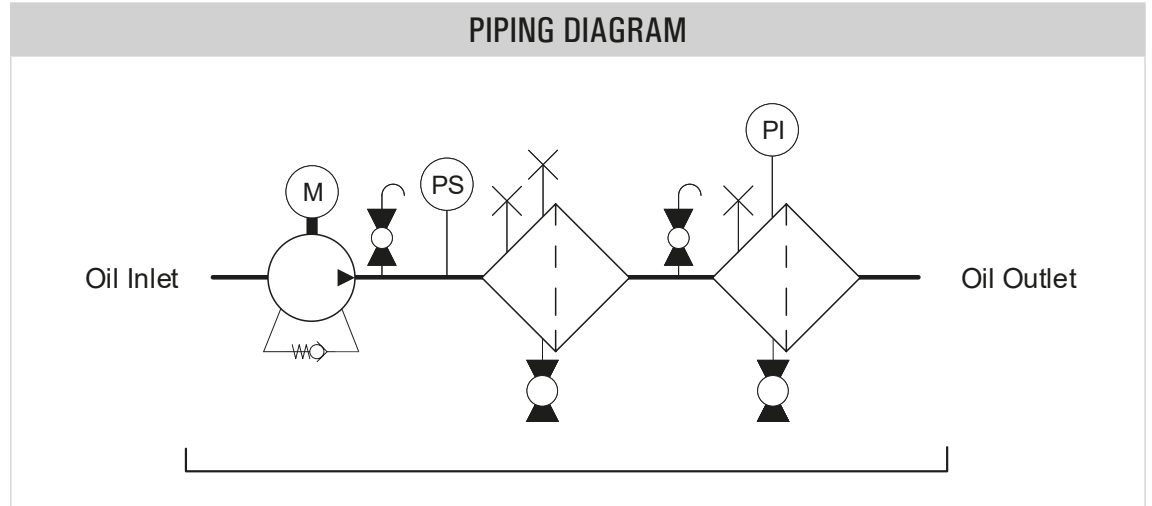


# Acidity Removal - HDU 2x15/25-25

For systems with fluid volumes up to 600 ltr.

## Product Sheet

### PIPING DIAGRAM



### INSTALLATION PRINCIPLE

