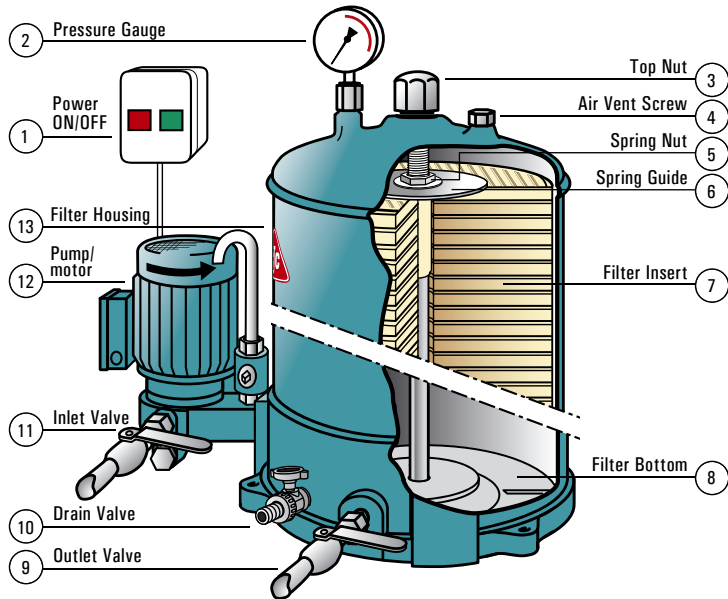


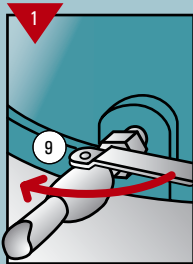


Quick Operating Guide

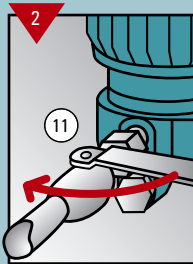
CJC™ Fine Filter HDU 27/-



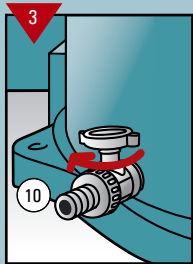
START



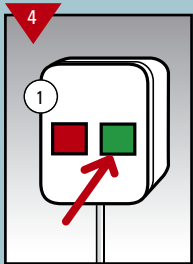
Open outlet valve



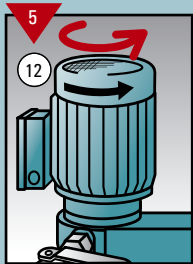
Open inlet valve



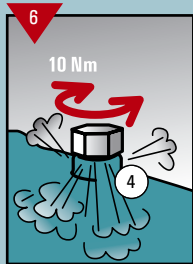
Secure drain valve is closed



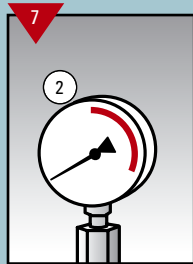
Start CJC™ Filter



Check rotation direction

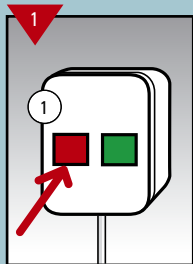


Open vent screw until oil appears beneath, then tighten again.



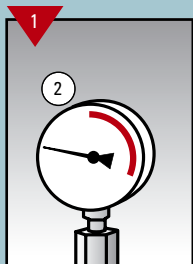
Control starting pressure

STOP

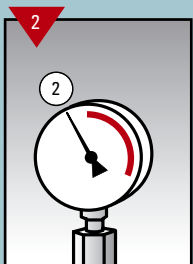


Stop CJC™ Filter

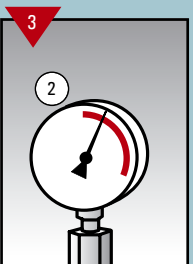
DAILY CHECK



Check filter pressure



Example of acceptable pressure



At high filter pressure, (under normal temp.) filter insert(s) must be replaced



Be aware that oil spillage is a serious safety risk - keep clean!

To avoid leakage, regularly inspect connections

26.11.2009