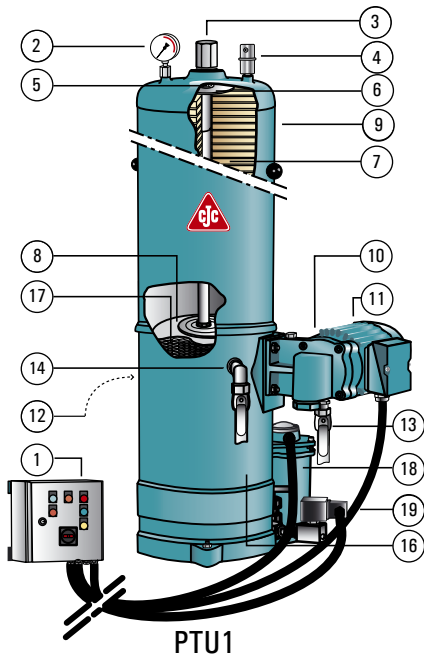


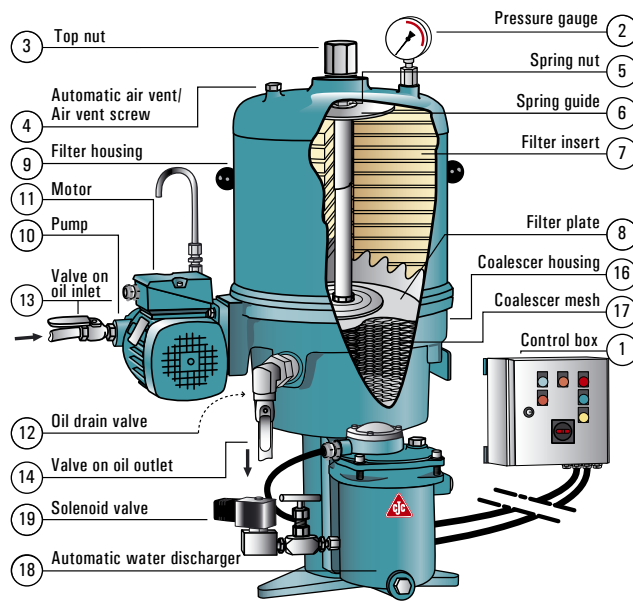


Filter Insert Replacement

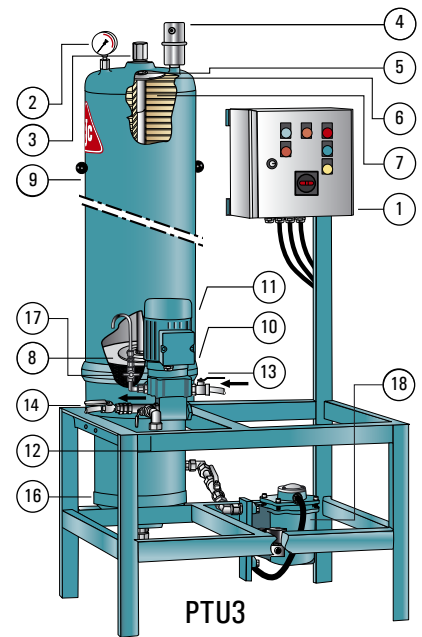
CJC™ Filter Separator PTU 27/-



PTU1

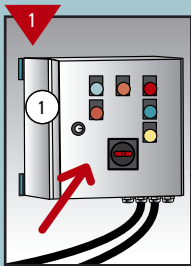


PTU2

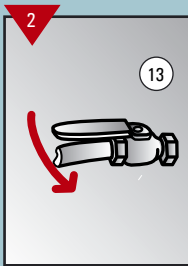


PTU3

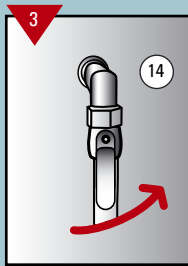
FILTER INSERT REPLACEMENT



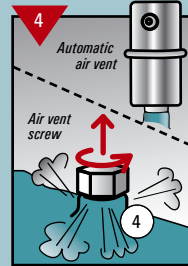
Stop CJC™ Filter



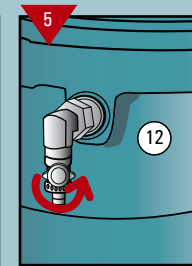
Close valve on oil inlet



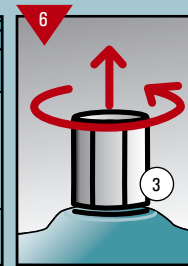
Close valve on oil outlet



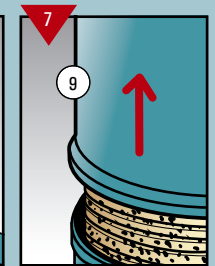
Automatic air vent: No action
Air vent screw: Open screw



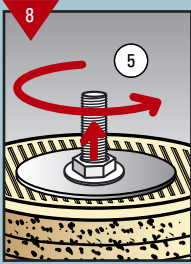
Open oil drain valve.
Drain acc. to environmental precautions!



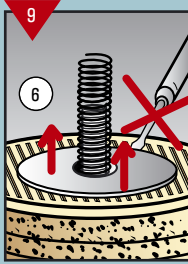
When filter housing is drained, unscrew top nut



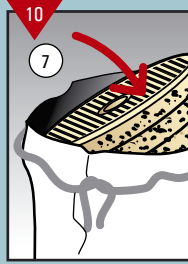
Lift off filter housing



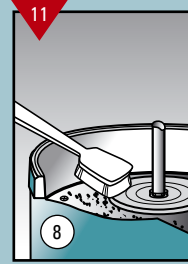
Unscrew spring nut



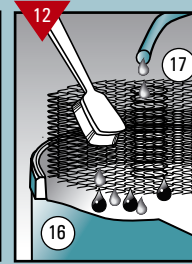
Remove spring and spring guide



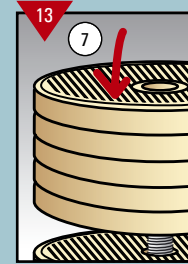
Remove used filter insert(s).
Deposit according to national legislation



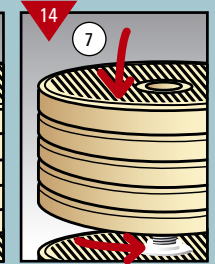
Clean filter plate



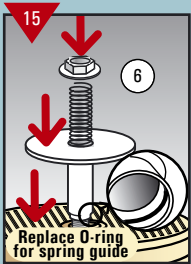
Remove mesh and clean in hot water. Do not use soap or detergents! Re-assemble



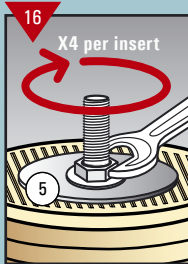
Place new CJC™ Filter Insert(s)



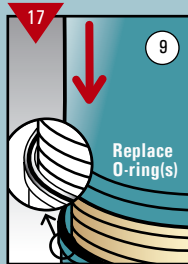
If > 1 insert type B, BLA or BLAT, use insert guide between filter inserts



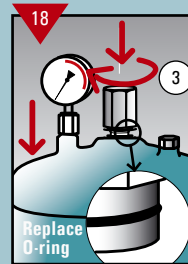
Mount spring guide carefully - make sure there is no contact between O-ring and thread



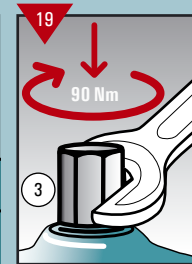
Tighten spring nut with hand until contact with spring guide. Then tighten spring nut 4 turns per filter insert



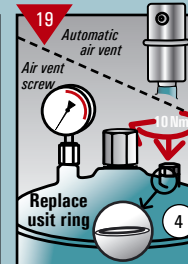
Replace O-ring and place filter housing. If type 27/108, replace both O-rings



Place filter housing. Replace O-ring for top nut



Tighten top nut with torque of 90 Nm



Automatic air vent: No action
Air vent screw: Replace usit ring for air vent screw, and tighten with torque of 10 Nm



Be aware that oil spillage is a serious safety risk - keep clean!

PF1202 - 11.11.2009