



CLEAN OIL
BRIGHT IDEAS

CJC™ Pressure Gauge

For CJC™ Fine Filter and Filter Separators

CJC™ Product Sheet - Accessories

APPLICATION

The **CJC™ Pressure Gauge** is used to monitor when it's time to replace the CJC™ Filter Insert. The CJC™ Filter Insert has to be replaced at least once a year, or when the needle on the Pressure Gauge enters the red zone.

The **Pressure Gauge** is suitable for use on CJC™ Fine Filters and CJC™ Filter Separators.

The **Pressure Gauge kit for Mini Mess** can be used on CJC™ Oil Filters that are equipped with a Mini Mess test coupling.

FUNCTION

The CJC™ Pressure Gauge provides an indication of pressure build up, caused by contamination accumulated in the CJC™ Oil Filter.

During the filtering process the pressure will increase to a maximum level, where the CJC™ Filter Insert has to be changed. To indicate starting level and maximum level, a **sticker** is supplied with the Pressure Gauge. During commissioning, the starting level must be set. Before setting the starting point, pressure and temperature has to be stable.

Remember: Before the Pressure Gauge is pressurised, the pressure equalisation port on top of the housing must be set open.

DIMENSIONS

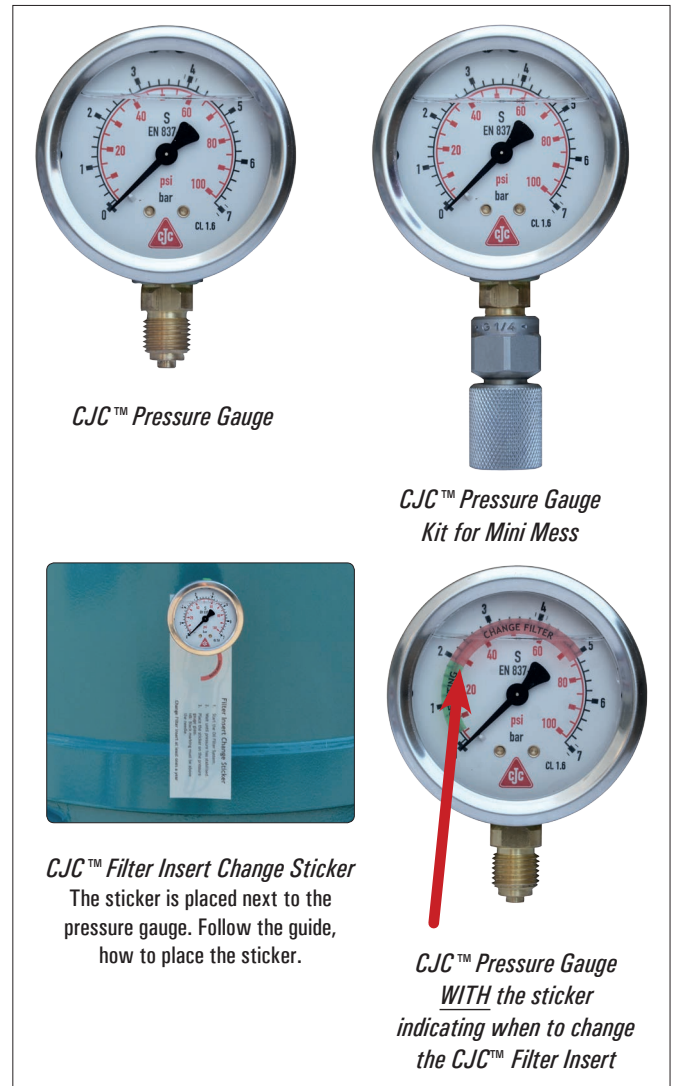
- Diameter 2.7" / 68 mm
- Depth 1.3" / 32 mm
- Height
 - Pressure Gauge 3.6" / 92 mm
 - Kit for Mini Mess 4.7" / 121 mm

IDENTIFICATION

To order the CJC™ Pressure Gauge, please use:

Article No:

0-7 bar, Ø 63 mm, 1/4 connection:	
Stainless steel housing, brass connection, lower mount:	
CJC logo	FD33134
No Logo	FD330039
Stainless steel housing and connection, safety glass, lower mount:	
CJC logo	FD330040
No logo	FD330041
Stainless steel housing and connection, safety glass, back mount:	
CJC logo	FD330042
No logo	FD330043
0-4 bar, Ø 40 mm, 1/4 connection:	
Stainless steel housing, brass connection, lower mount, no rotatable scale:	
CJC logo	FD330045
Kit for Mini Mess	
	FB5300402



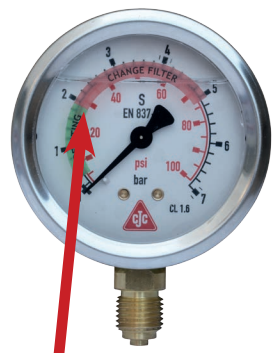
CJC™ Pressure Gauge

CJC™ Pressure Gauge
Kit for Mini Mess



CJC™ Filter Insert Change Sticker

The sticker is placed next to the pressure gauge. Follow the guide, how to place the sticker.



CJC™ Pressure Gauge
WITH the sticker
indicating when to change
the CJC™ Filter Insert

TECHNICAL DATA

Dial size	inch / mm	2.5 / 63.5
Pressure range	bar / psi	0-7 / 0-100
Figure interval	bar / psi	0.2 / 5
Accuracy (EN 837-1)		within 1.6% of maximum graduation
Pressure gauge casing		Stainless Steel
Case filling fluid		Silicon Oil M50
Media temperature	°C / °F	-20 - 85 / -4 - 185
Ambient temperature	°C / °F	-20 - 60 / -4 - 140
Connection		
Pressure gauge		1/4" BSP
Kit for Mini Mess		Mini Mess test coupling connection