



PTU2 27/27 for hydraulic, turbine lube & gear oils

CJC® Offline Filter Separator - with flexible Control Box

Product Sheet

APPLICATION

The CJC® Filter Separator PTU2 27/27 PVM for hydraulic, turbine lube & gear oils (with good demulsibility) with flexible control box. The CJC® PTU2 is ideal for separation of water, removal of particles and oil degradation products for eg. defibrators in paper mills, steam turbines and marine thrusters.

CUSTOMER BENEFITS

Installing a CJC® PTU2 for hydraulics, you can obtain below benefits:

- clean & dry oil
- reduced wear on components like pumps, cylinders, bearings, valves, gears etc.
- prolonged lifetime on both components & oils
- reduced risk of system breakdown
- increased uptime
- savings on oil maintenance budget

FUNCTION

The filter pump draws oil from the bottom of the tank and presses it through the filter insert. From the centre of the insert the oil flows down into the coalescer housing where water droplets - if any - adhere to the coalescer element. Here larger drops will form and settle in the bottom of the coalescer housing.

The filter outlet port is placed in the top of the coalescer housing. The filtered oil should be returned to the tank close to the suction pipe of the main system pump. **Note that the return point preferably should be non-pressurized. Contact us in case this is not possible.** On the PTU2 with automatic water discharge, separated water is drained automatically. The discharge function can be monitored on the control box. The PTU2 models are also available with manual water discharge.

The pressure drop over the filter - and consequently the particle contaminant absorption of the filter insert - is monitored on the pressure gauge on the filter top.

THE FILTER PUMP

The filter pump is as standard a CJC® magnetically coupled gear wheel pump. The electric motor can be supplied for all standard AC and DC voltages.

FILTER INSERT

The CJC® Filter Inserts consist of several discs bonded together. The material is cotton linters (cellulose).

CONTROL BOX

The control box incorporates not only automatic water discharge function, but also motor control, motor protection and high pressure detection (if mounted). Furthermore, the delivery can include a 3 meter power supply cable for flexible mounting apart from the filter housing.

OPTIONS

- Tank
- Drip pan
- Pressure switch
- Heater
- Control box ((no/flexible)

FILTRATION ABILITY

Please see page 2.



The CJC® Filter Separator PTU2 27/27 PVM for hydraulic, turbine lube & gear oils with flexible control box

TECHNICAL DATA

PTU2 27/27 PV or PVM-E2WZ for hydraulic, turbine lube & gear oils

Viscosity grade:		max ISO VG 150	
Pump flow, per hour (std.)	ltr/gal	90 · 300 / 24 · 80	
Control box		no	flexible
Pump type		PV	PVM
Pump inlet pressure, max.	bar/psi	0.5 / 7.2	10 / 145
CJC® Filter Inserts 27/27, std.	pcs.	1	
Power consumption, aver.	kW	0.18	
Pressure drop, max.	bar/psi	1.8 / 26	
Oil temperature, max. *)	°C / °F	60 / 140	
Dirt holding capacity, appr.	ltr/gal	4 / 1.1	
Dry weight	kg/lb	76 / 168	
Operating weight, wet	kg/lb	90 / 198	
Design pressure, filter	bar/psi	7 / 102	
Ambient temperature, max.	°C / °F	45 / 113	
Water discharge		Automatic	

*) The standard filters are designed for a max. temp. of 60 °C/140 °F. Other conditions, please contact us.

APPLICABLE FILTER INSERTS

Type	Application for
BLAT:	Hydraulic oils, turbine oils and gear oils, high water content



PTU2 27/27 for hydraulic, turbine lube & gear oils

CJC® Offline Filter Separator - with flexible Control Box

Product Sheet

COMPONENTS

Item	Part
1	CJC® Filter Separator PTU2 27/27
2	Pump, type PVM
3	Pressure gauge
4	Shut off valve, oil drain
5	Connector - oil inlet
6	Connector - oil outlet
7	Sampling point
8	Water discharger, automatic
9	Shut off valve, water outlet
10	Solenoid valve

FILTRATION ABILITY

• Water Removal by Separation

The CJC® Filter Separator removes water from oil to very low levels. The efficiency of water removal depends on the oil type and temperature.

• Particle Removal

All CJC® Filter Inserts have the following filtration degree:

- **3 µm abs.:** 98.7% of all solid particles > 3 µm
- **0.8 µm nom:** 50% of all solid particles > 0.8 µm are retained in each pass.

The dirt holding capacity is 4 litres of evenly distributed solids.

• Degradation Products

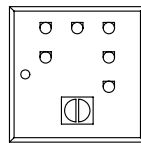
Oxidation products, resin / sludge, and varnish are retained by the cellulose material, which will retain appr. 4 kgs of oil degradation products.

To achieve the most efficient water separation on high viscosity oils, **preheating the oil** before filter pass may be necessary. Consult C.C.JENSEN A/S for further information.

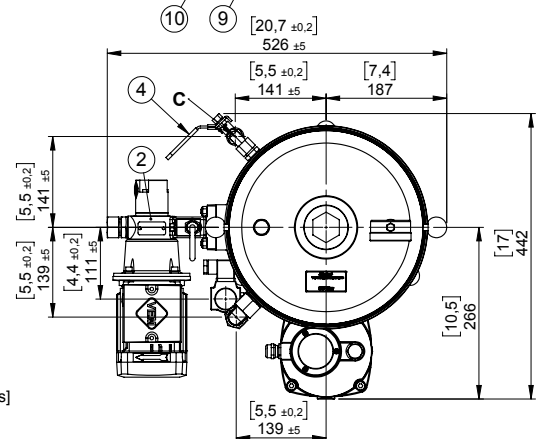
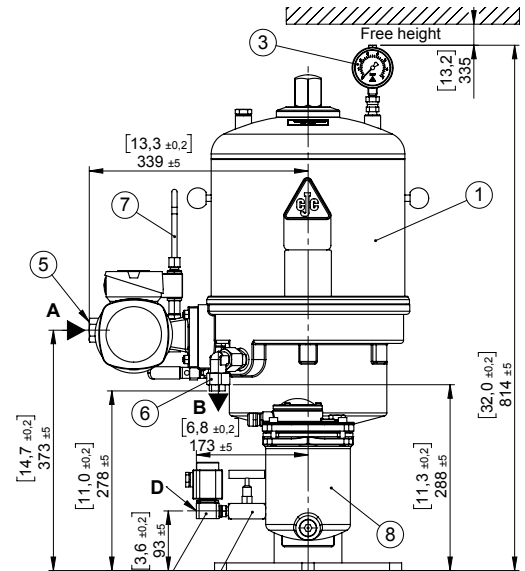
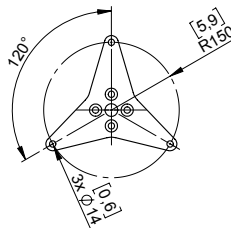
DIMENSIONS

FA9601350-XYZ

Control box loose delivery.
Dimensions: 300x300x200
[11,8x11,8x7,9]



Foundation plan



Design pressure 7 bar/102 psi
Design temp. 60°C/140°F
Weight 76 kg/167 lbs

- A = \varnothing 18, Oil inlet
- B = \varnothing 18, Oil outlet
- C = 1/2" BSP, Oil drain
- D = 1/4" BSP, Water outlet

Measurements in mm and [inches]
P&I Diagram No. 7000997

INSTALLATION PRINCIPLE

